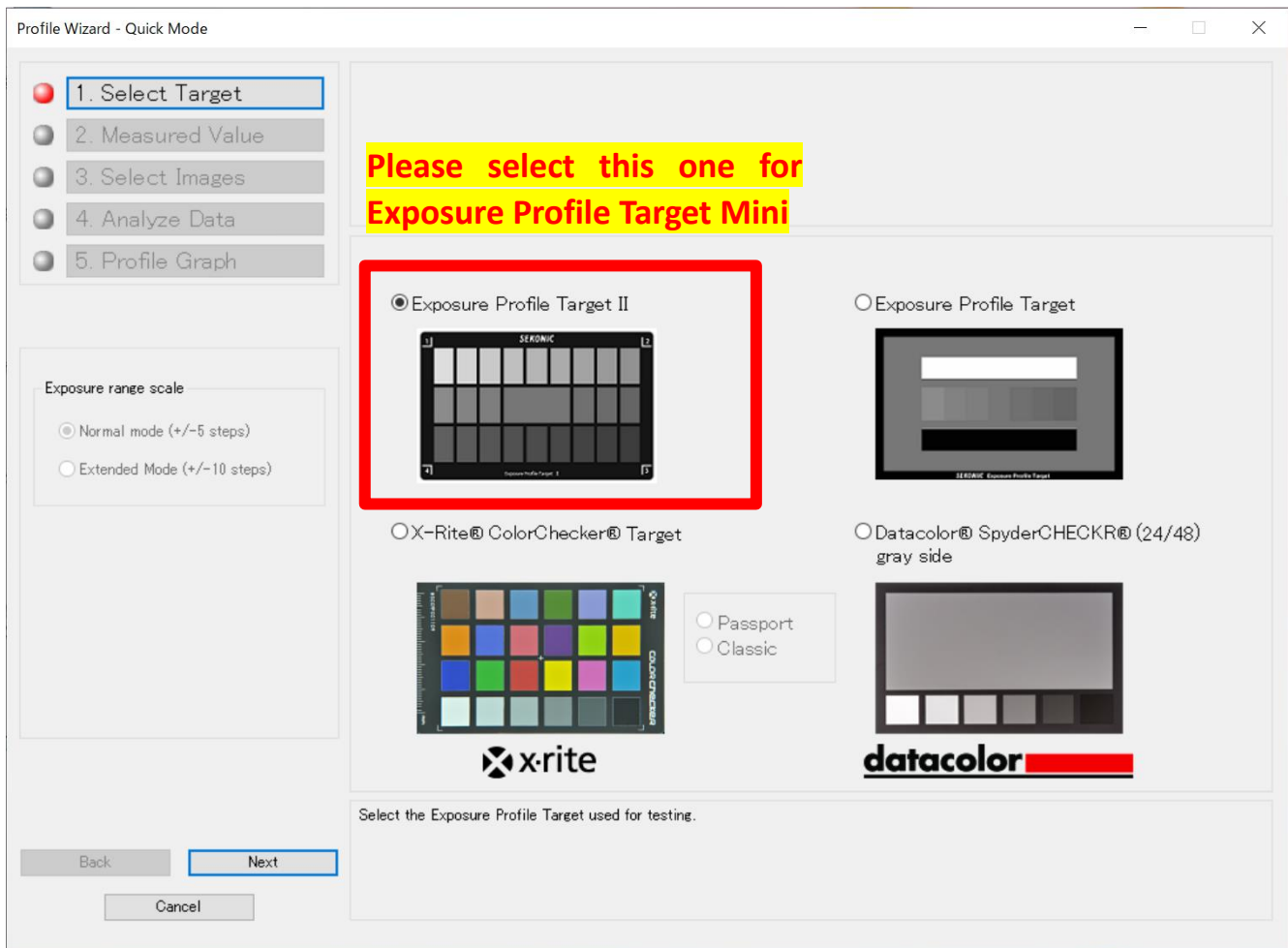


HOW TO USE EXPOSURE PROFILE TARGET MINI ON DTS

When you use Data Transfer Software (DTS), you need to select the target you are using. However, we do not have an option as “Exposure Profile Target Mini”. If you make exposure profile on Data Transfer Software with Exposure Profile Target Mini, please select “Exposure Profile Target II”. It works correctly with this selection.



Should you have any questions, please feel free to get in touch with us.

【Contact Information】

SEKONIC CORPORATION

Sales & Marketing Department

7-24-14, Oizumi-Gakuen-Cho,

Nerima-Ku, Tokyo 178-8686

Japan

TEL: +81-3-3978-2335 FAX: +81-3-3978-5229

E-MAIL: intl@sekonic.co.jp